



Guidelines For Installation of Informatory Sign Board Under Pradhan Mantri Gram Sadak Yojana



**National Rural Infrastructure Development Agency
Ministry of Rural Development
Government of India
First Revision-2019**

Forward

India has essentially a rural-oriented economy with 70 percent of its population living in its village. Communication is a key component of Rural Development by promoting access to the economic & social services and thereby generating increased agricultural incomes and productive employment opportunities. It is also a key ingredient in ensuring poverty alleviation.

As against the poor connectivity prevailed across the rural area of the country the Prime Minister announced a massive rural roads programme in December, 2000 to provide all weather access to eligible unconnected habitations of population more than 500 (250 in case of special category states, desert areas and tribal areas and identified IAP districts) and it was further extended to connect unconnected habitations in Naxal affected blocks of Left Wing Extremist (LWE) district with population more than 100.

Subsequently, the need for maintenance and consolidation of existing rural road network felt necessary to ensure that it fulfils the primary objective of connectivity for the rural community and enable economical transportation of goods and for services to provide better livelihood opportunities as a part of poverty reduction strategy by facilitating rural market centres and rural hubs. With this backdrop the programme called PMGSY-II was launched during 2013.

Since the task of connecting all eligible habitations with an all weather road has been substantially achieved (more than 97%) with sanction of cent percent under PMGSY-I and substantial clearance of the length earmarked under PMGSY-II against almost all the state with target date of completion as March, 2020, it was felt to strengthen and widen its ambit further to improve/upgrade major link routes which connect habitations to agricultural and rural market (GrAMS), higher secondary schools and hospitals through another scheme called PMGSY-III. Under the approval of Union Cabinet the scheme has been launched during July, 2019 with a target of 1,25,000 km to be upgraded and completed by March, 2025.

All the above programme under PMGSY bears paramount importance in achieving sustainable development of rural economy which fully depends upon its successful implementation with all transparency involving the road users and citizen as a whole. For this disclosure of all required information relating to the project is absolutely necessary. Installation of informatory Sign Boards plays an important role where all the information relating to the project taken up under PMGSY is displayed for the information of public so that executing agency can be made more accountable during execution of the project as per the provision and specification thereof. Such Informatory Sign Boards are fixed since inception of the programme with provision of manual printing and writing over a Mild Steel sheet which requires frequent painting & re-writing, also not properly visible and readable. Now in this document appropriate Sign Boards using "**Aluminium**

Composite Material (ACM)” with retro-reflective sheeting as per IRC-67 has been adopted for proper visibility and durability having required guarantee period. Hope this document will be of more useful and acceptable to all concern.



(Alka Upadhyaya)
Director General

National Rural Infrastructure Development Agency



Guidelines for Installation of Informatory Board

All the roads under PMGSY shall be installed with mandatory regulatory signs, cautionary/warning signs and informatory road signs as per provisions contained in Code of Practice for Road Signs, IRC: 67-2012 and as per provisions given in Section 1700 of Specifications for Rural Roads, Ministry of Rural Development, published by Indian Roads Congress in January, 2014. Adequate provisions for road signs shall be made in DPR.

In addition to the traffic sign markings and other road appurtenances, it would be mandatory to install Logo Board, Main Informatory Sign Board and Citizen Information Board on all roads as per guidelines given here under.

Informatory Board prescribed for Pradhan Mantri Gram Sadak Yojana (PMGSY): The NRRDA has prescribed the following types of boards.

1. **Logo Board at the Starting Point of the PMGSY Road:** Any road work under Pradhan Mantri Gram Sadak Yojana generally starts from existing NH, SH, MDR or ORD and it is essential that the information should be displayed on the road from where the PMGSY road starts, as such, a 'Logo Board-Entry' Shall be installed as per the details given in **Figure 1(A)**. The information should be displayed in such a way that it should be visible from both directions.
2. **Logo Boards at intermediate distance:** Logo board as prescribed in **Figure 1(B)** shall be fixed in the following manner :
 - a. If road length is <2 Km, one logo board at finishing point of the road.
 - b. If road length is >2 Km, one logo board at approx every 2 Km including the board at finishing point of the road.
 - c. Colour and specification for PMGSY logo: Retro-reflecting orange Colour of Class A/Class B, Steel Grey : Black 50%, Bar, Road and Lettering: Black 100%
 - d. Size of PMGSY logo: Diamond 600 mm X 600 mm
 - e. Size of PMGSY Title Plate : 900 mm X 250 mm
 - f. Information to be displayed on both sides.



3. **Typical PMGSY Logo and Informatory Sign Board:** An Information board as prescribed in Figure 1700.1 of Section 1700 of Rural Road published by IRC in January, 2014 shall be fixed at starting point of PMGSY road. The details are given in **Figure 2**.
4. **Citizen's Information Board:** with a view to provide information about actual work proposed in the PMGSY road under construction, Citizens' Information Board as prescribed in **Figure 3** and **Figure 4** shall be fixed on every road in the manner given below. The purpose of the board is to share information with the local citizens and thereby enhance transparency in the programme implementation.
 - a. If road length is less than 5 Km, the board containing details of flexible pavement (Board A) shall be fixed either at starting point or at such a prominent location on the road where maximum number of citizens / prospective beneficiaries could view the details. In cases where road length is more than 5 Km an additional board should be fixed at every 5 Km length or part thereof.
 - b. Board containing details of CC/flag-stone or rigid pavement/semi-rigid pavement (Board B) shall be fixed at one place in every road, preferably at the starting point of such pavement (walls of existing houses can be used for displaying information with the consent of the owner).
 - c. The typical cross sections and prescription about various layers shown in the drawing are only illustrative, the cross section of actual proposed work and actual details of proposed work shall be displayed on the boards.
5. **Maintenance Information Board:** Maintenance Information Board as prescribed in **Figure 5** shall be fixed at starting point of PMGSY road.

General Guidelines

- 1 Wherever the logo is to be used it shall conform to design, colour and size as prescribed in para 2 (c), (d) and (e) above. The design and colour of logo shall not be changed.
- 2 Generally, the prescribed design and colour scheme of the other boards shall be adhered to, however, in exceptional cases, based on availability of the material; other standard colour as prescribed by States may be used.
- 3 All the boards will be made up of welded tubular steel frame and sheet of appropriate size as per the design given in the pamphlet. If deemed appropriate, masonry concrete wall or other alternative structure may also be erected instead of steel structure depending upon the local conditions.
- 4 Where English is not understood by the common citizen, it is not desirable that the information on boards is displayed in English language. The boards should display information in local language and content should enable the local citizens to understand it without any ambiguity.
- 5 Setting of the informatory signs with respect to the carriageway shall be regulated as per provisions contained in clause 3 of IRC: 67-2012 .

Fig. 1(A) Logo Board at Starting Point

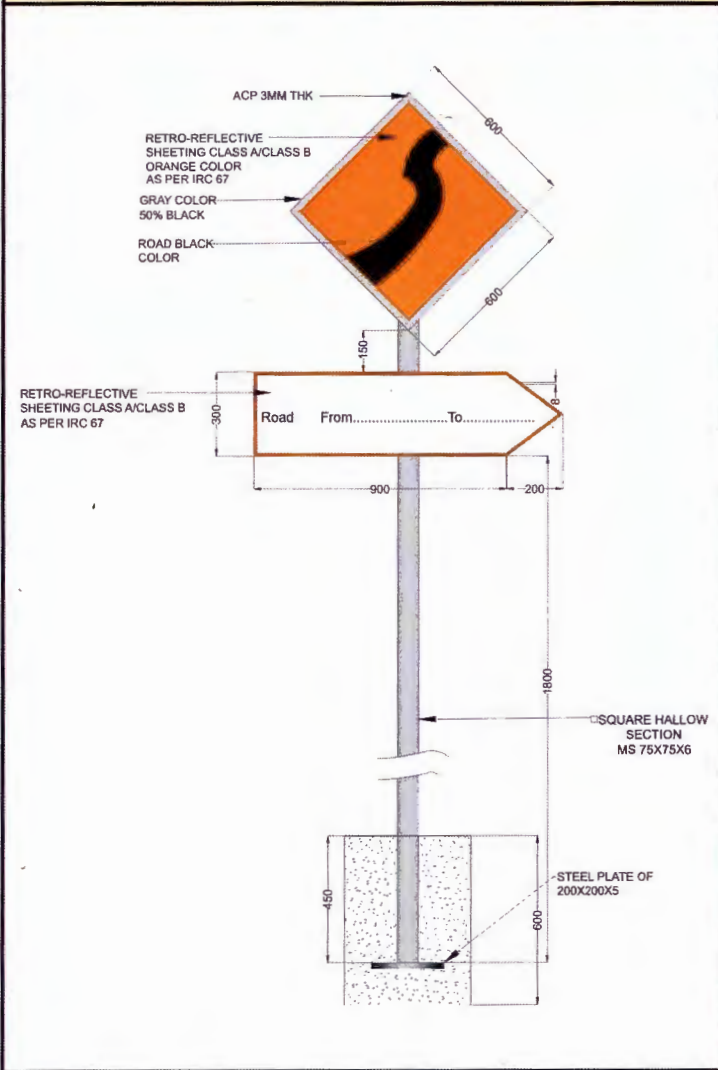
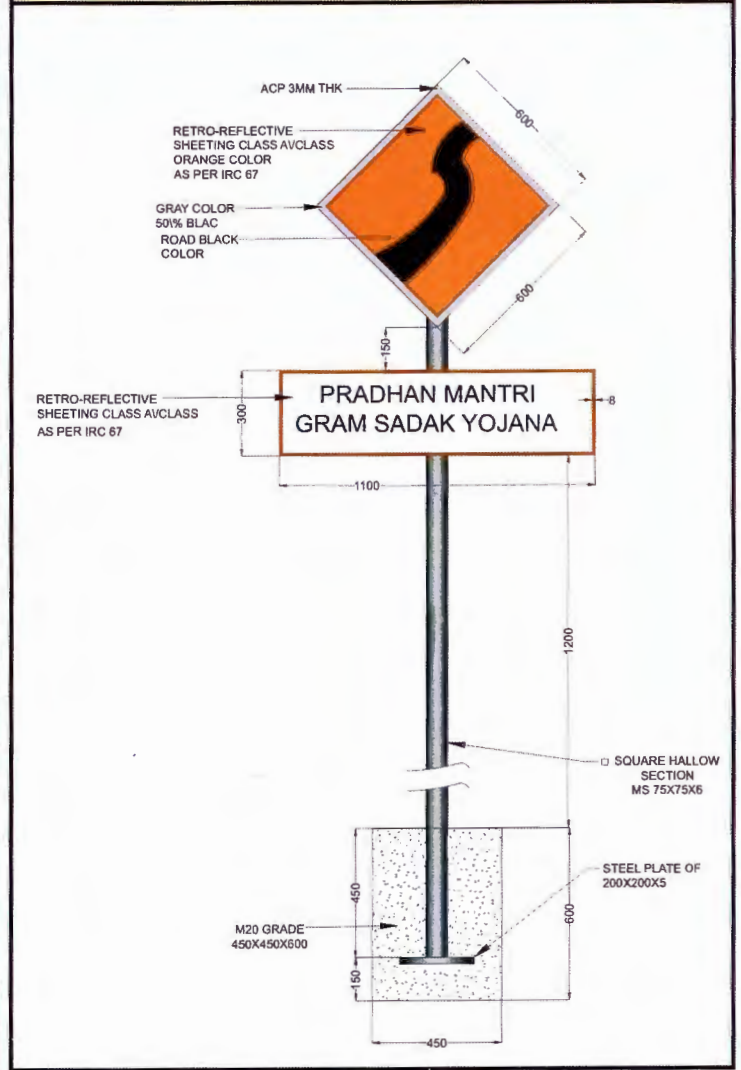
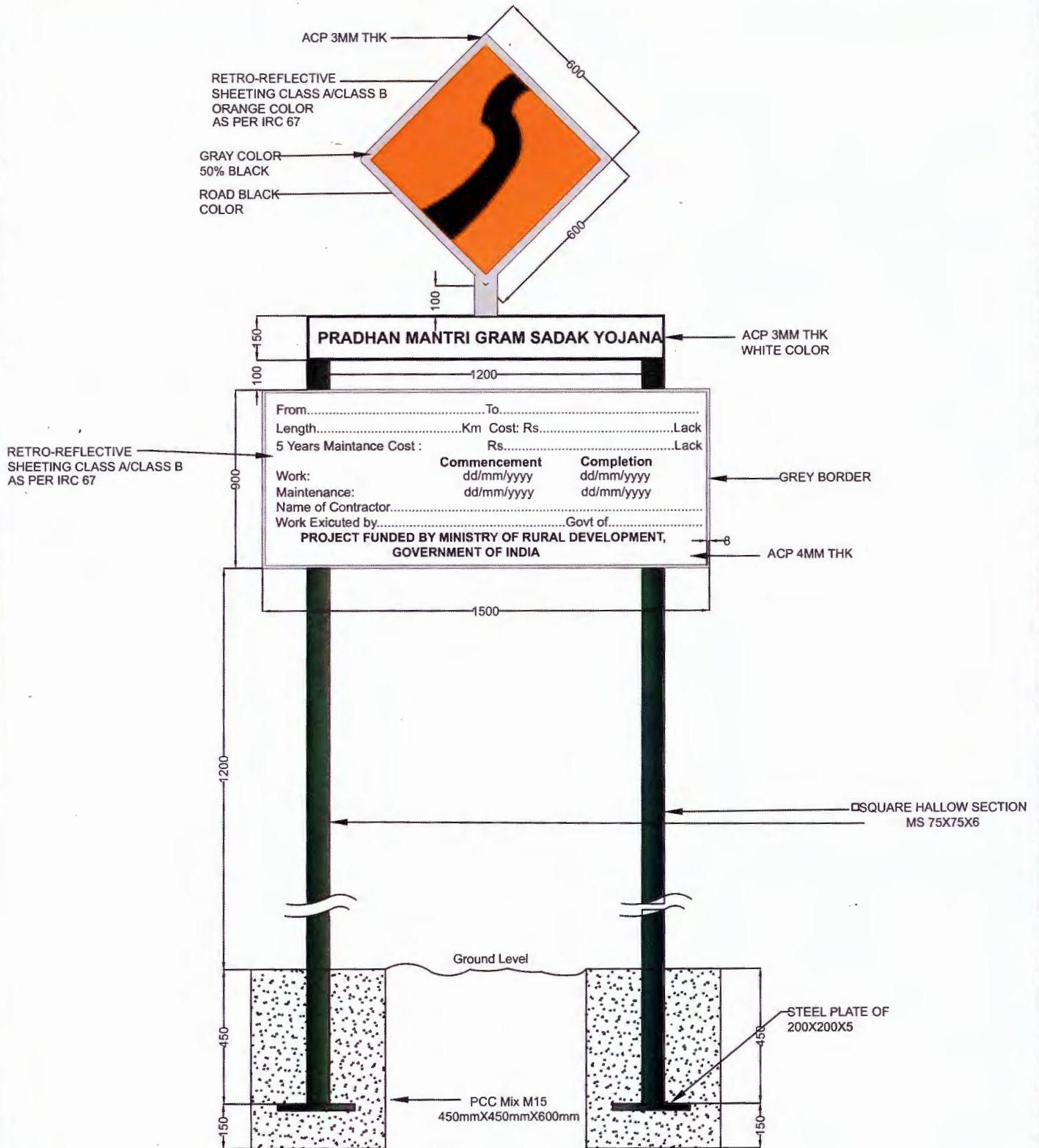


Fig. 1(B) Logo Board at Intermediate Distance



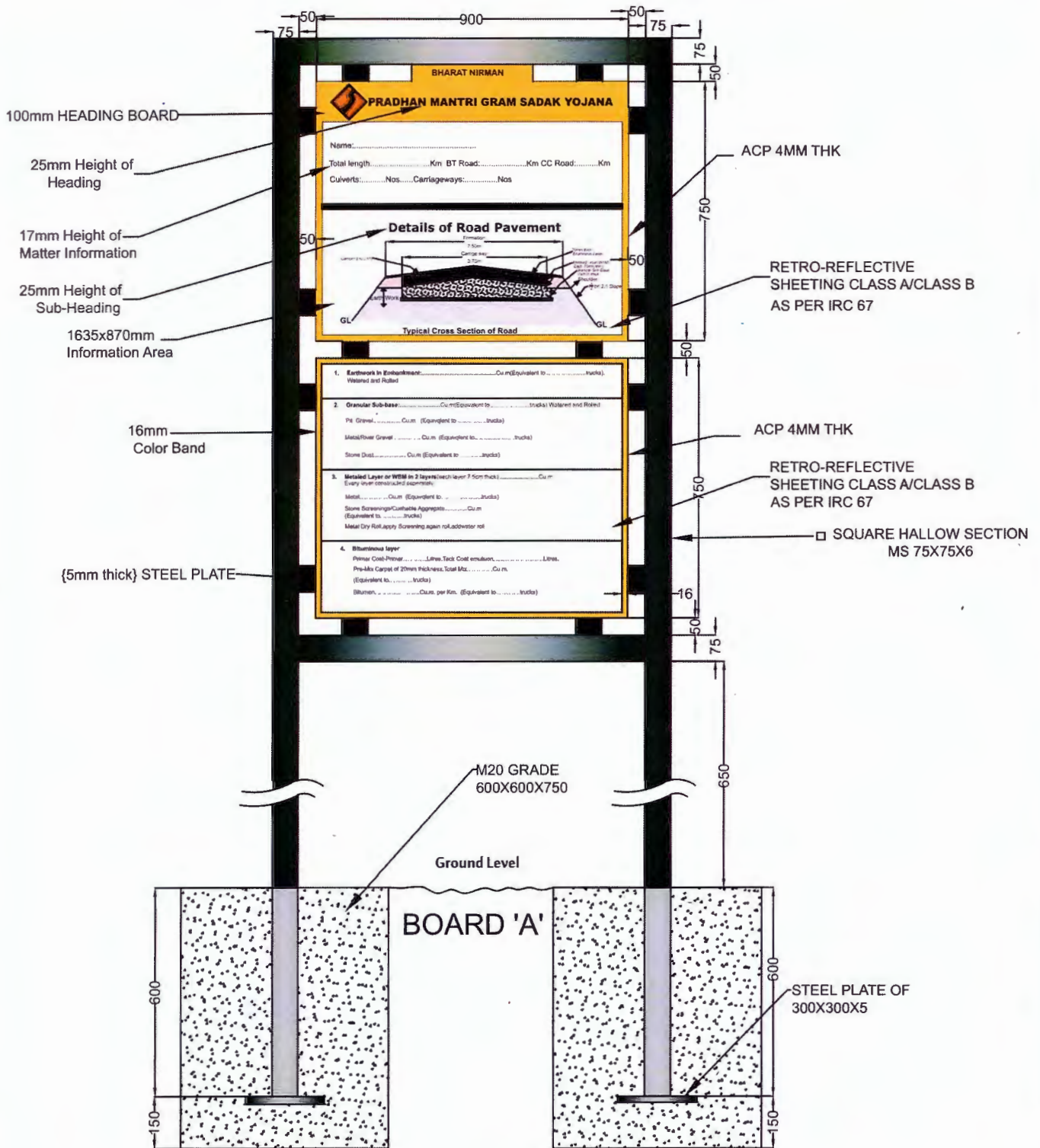
NOTE: ALL DIMENSIONS ARE IN MM

Fig. 2-TYPICAL PMGSY LOGO AND INFORMATORY SIGN BOARD



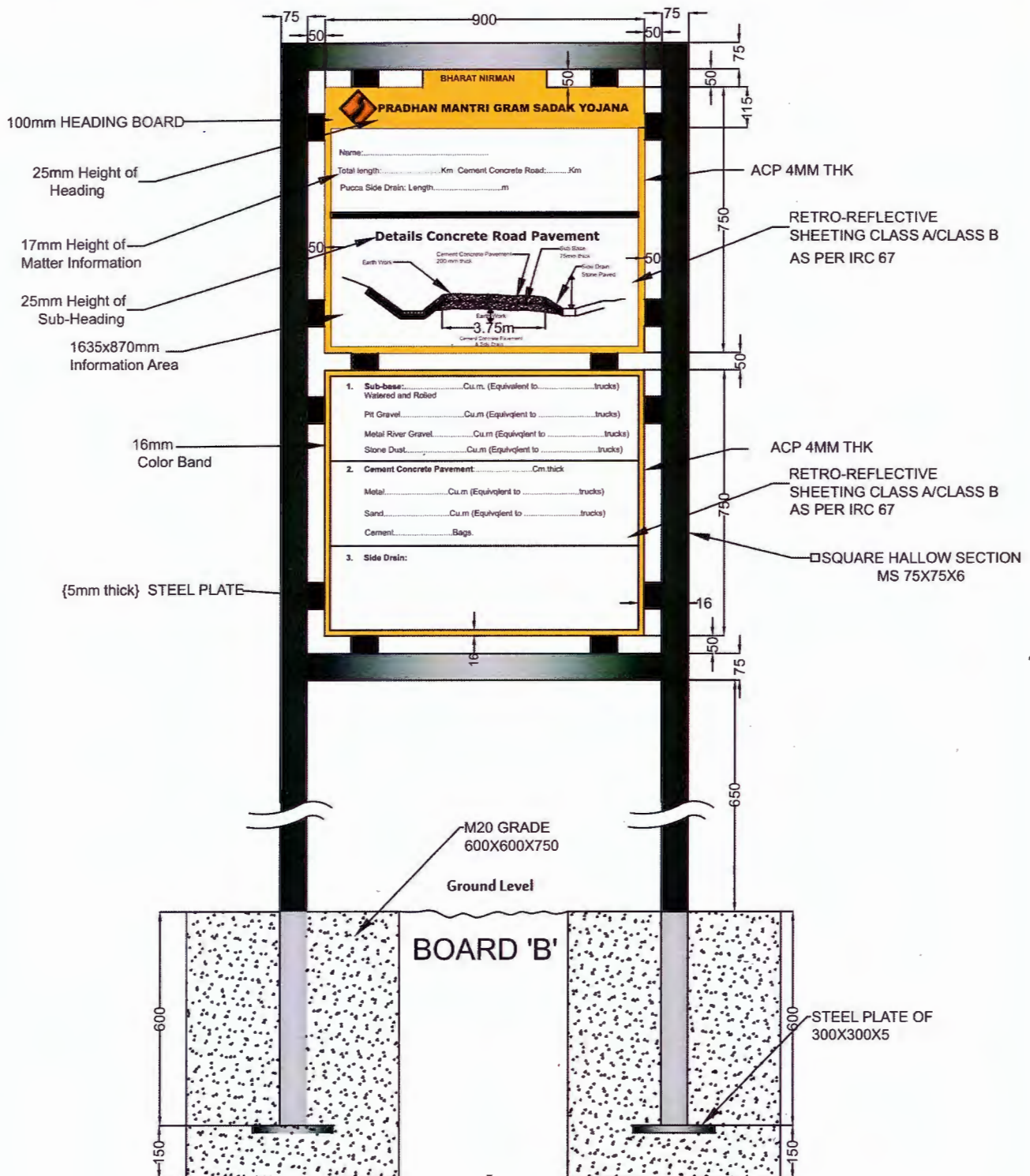
NOTE: ALL DIMENTIONS ARE IN MM

Fig. 3-CITIZEN INFORMATION BOARD "A"



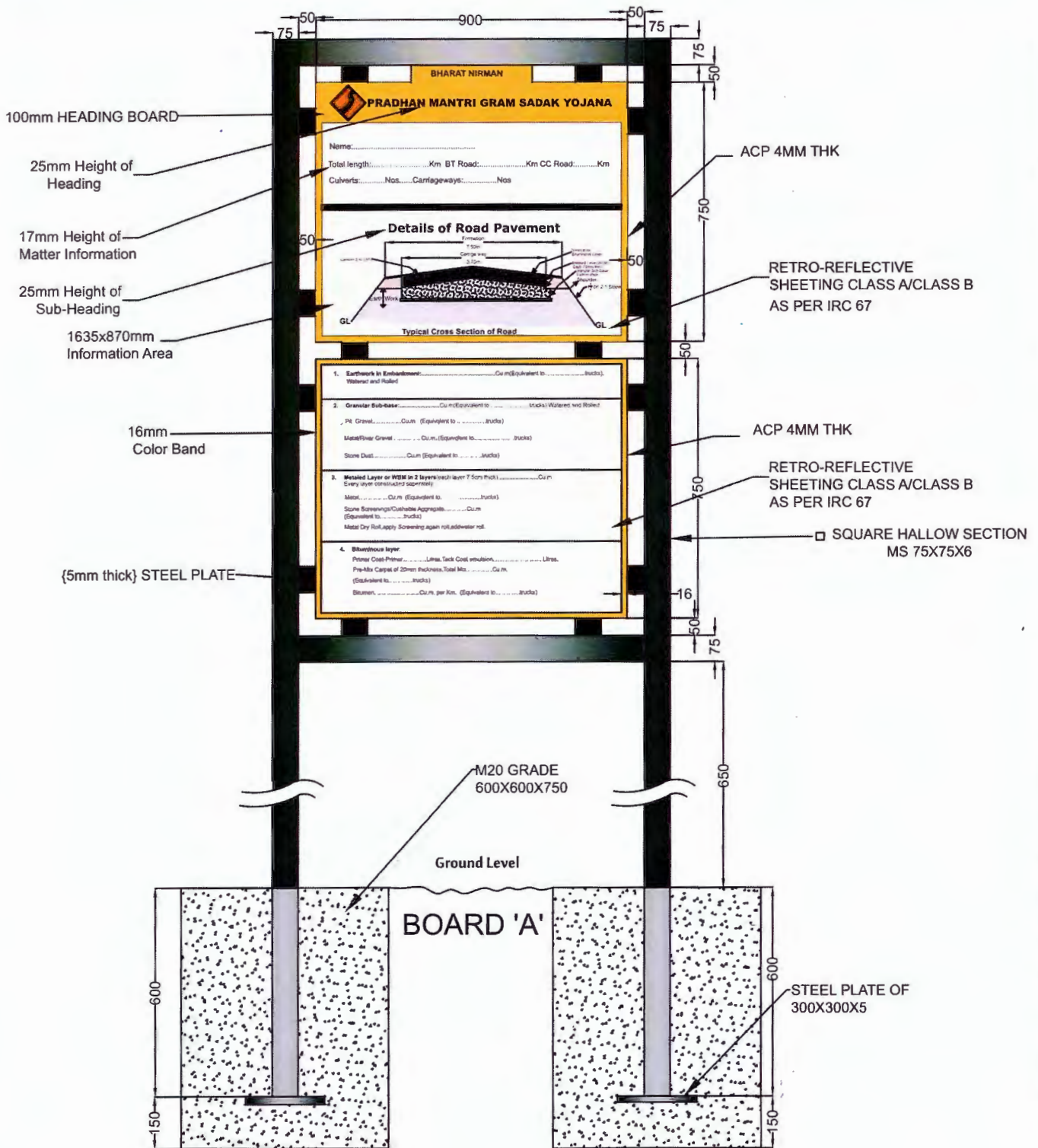
NOTE: ALL DIMENTIONS ARE IN MM

Fig. 4-CITIZEN INFORMATION BOARD "B"



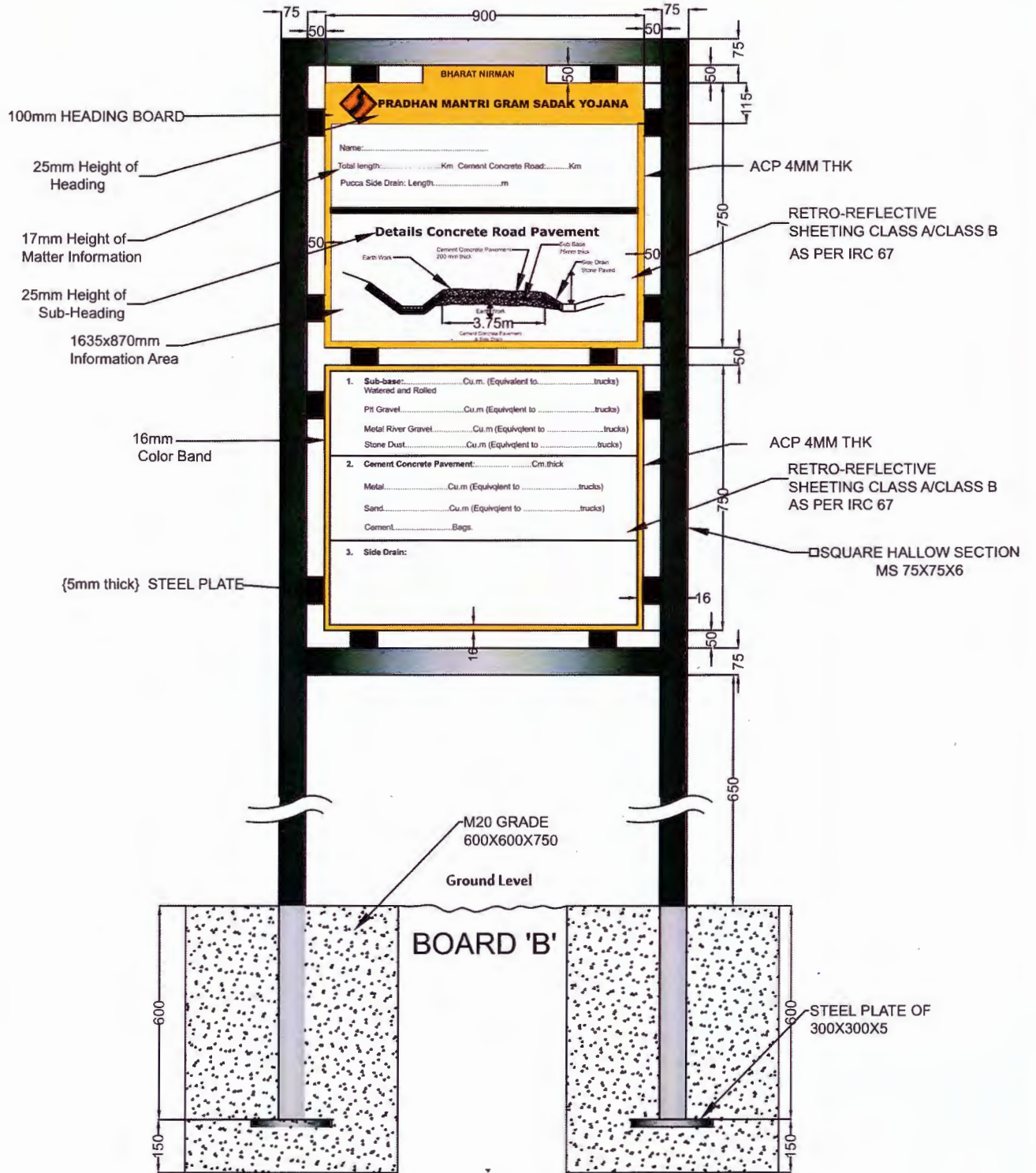
NOTE: ALL DIMENTIONS ARE IN MM

Fig. 3-CITIZEN INFORMATION BOARD "A"



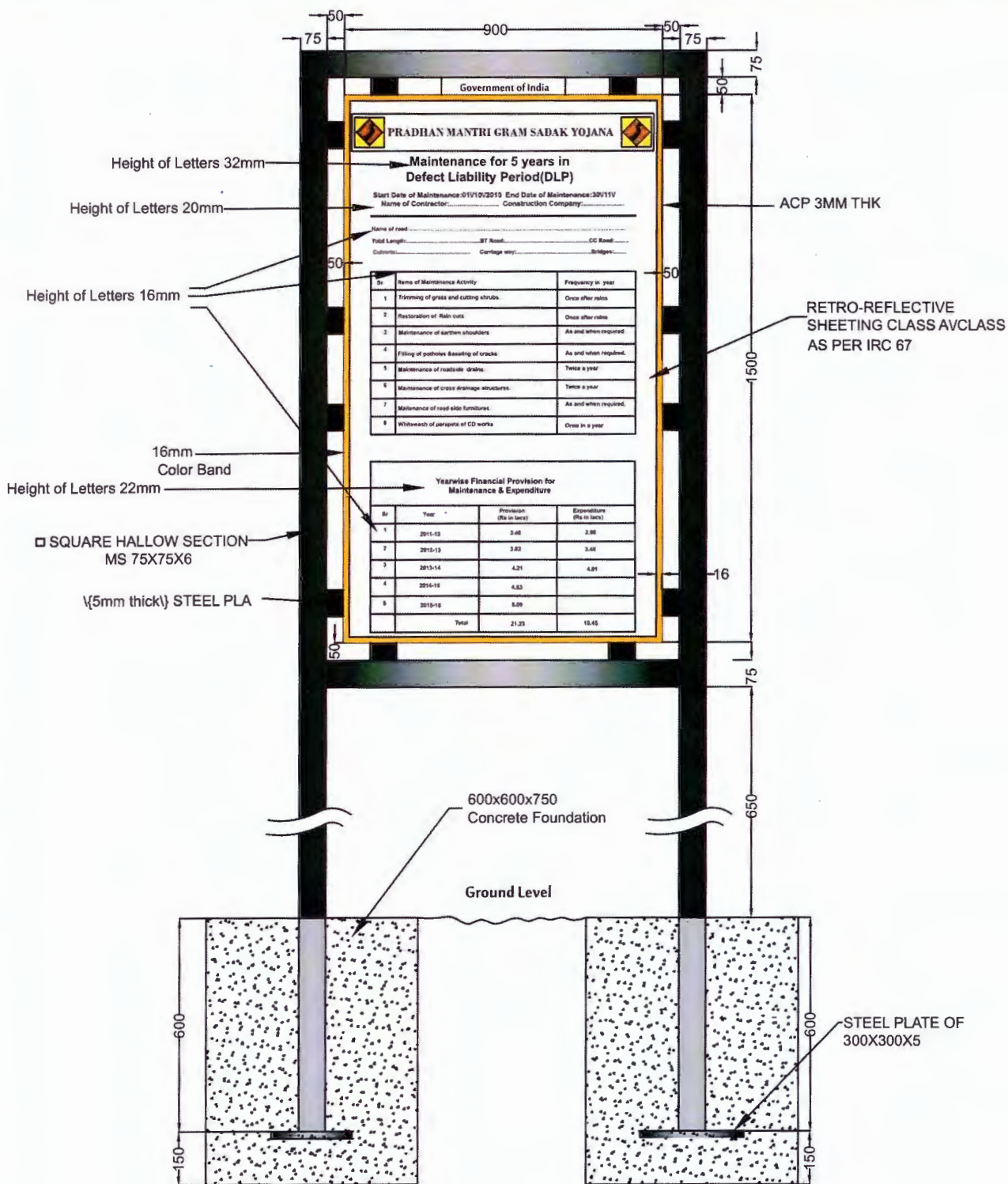
NOTE: ALL DIMENTIONS ARE IN MM

Fig. 4-CITIZEN INFORMATION BOARD "B"



NOTE: ALL DIMENTIONS ARE IN MM

Fig. 5-MAINTENANCE INFORMATION BOARD



NOTE: ALL DIMENTIONS ARE IN MM



National Rural Infrastructure Development Agency

Ministry of Rural Development Government of India

5th Floor, 15 NBCC Tower, Bhikaji Cama Place, New Delhi - 110066

Phone: 91-11-26716930/33 Fax: 91-11-26179555 email: nrrda@nic.in

Website: www.pmsgy.nic.in, omms.nic.in